

Parameter setting guide for Columbus V-800 MarkIII V1.0

Nov. 2021

Factory setting

Multi-GNSS: GPS, GLONASS, Beidou

NMEA sentences: \$GNGGA, \$GNGSA, \$GPGSV, \$BDGSV, \$GLGSV, \$GNRMC, \$GNVTG.

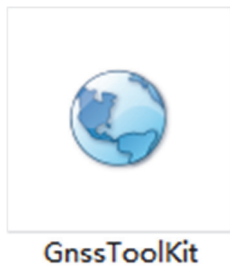
Update rate: 1Hz (output once every second).

Baud rate: 38,400bps.

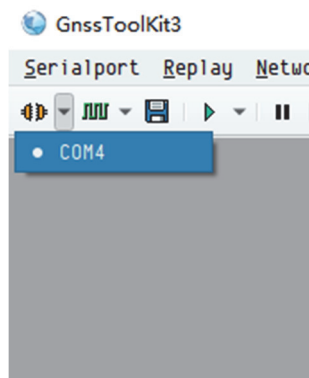
You can modify the parameters according to your actual needs.

Connect to V-800 Mark II

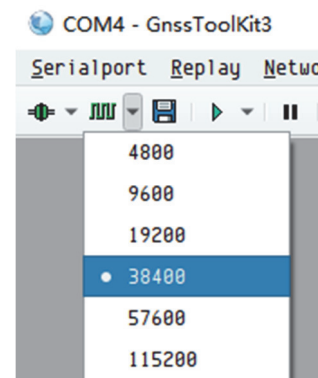
1. Run "GnssToolKit".



2. Select the port number.

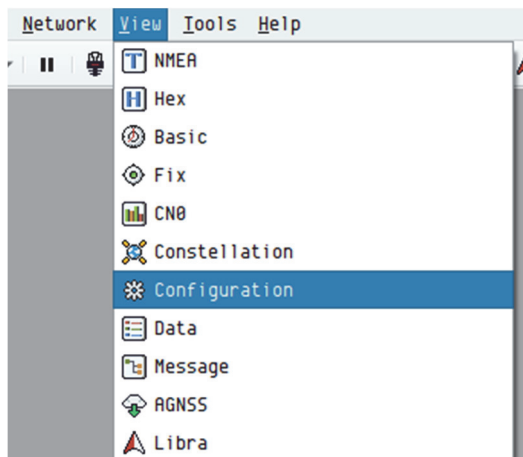


3. Select 38400 as the baud rate.



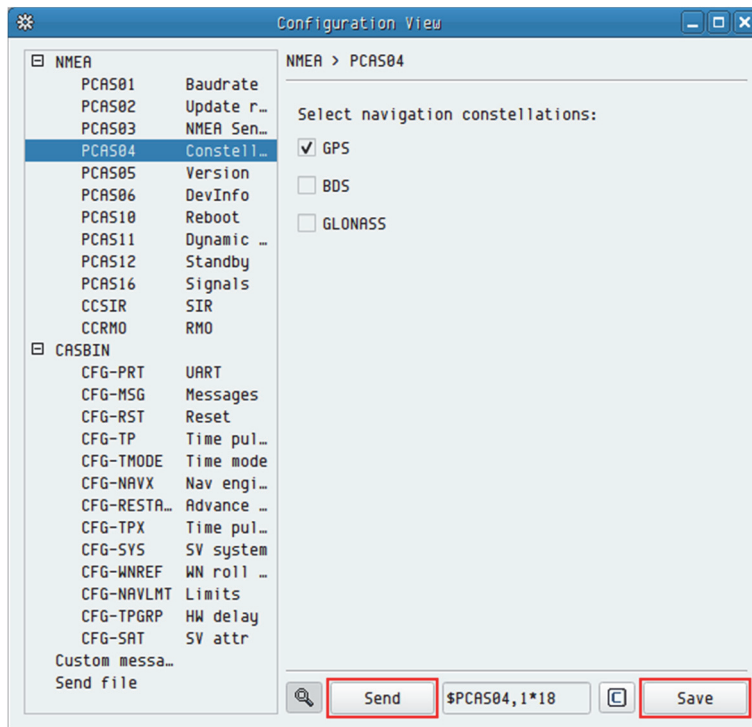
Select the satellite systems

1. Click "View"- "Configuration".



2. Click "Constellations", select the satellite systems to be used, click "Send", and then click "Save".

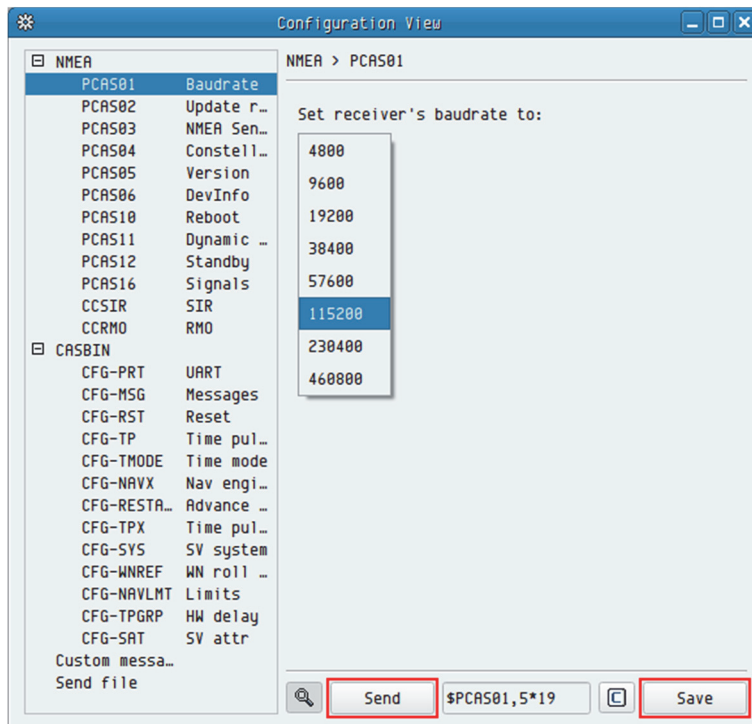
Remarks: When single-select GPS system, the NMEA output sentence will start with \$GPXXX. At this time, it can be used as a standard GPS receiver.



Modify the serial port baud rate

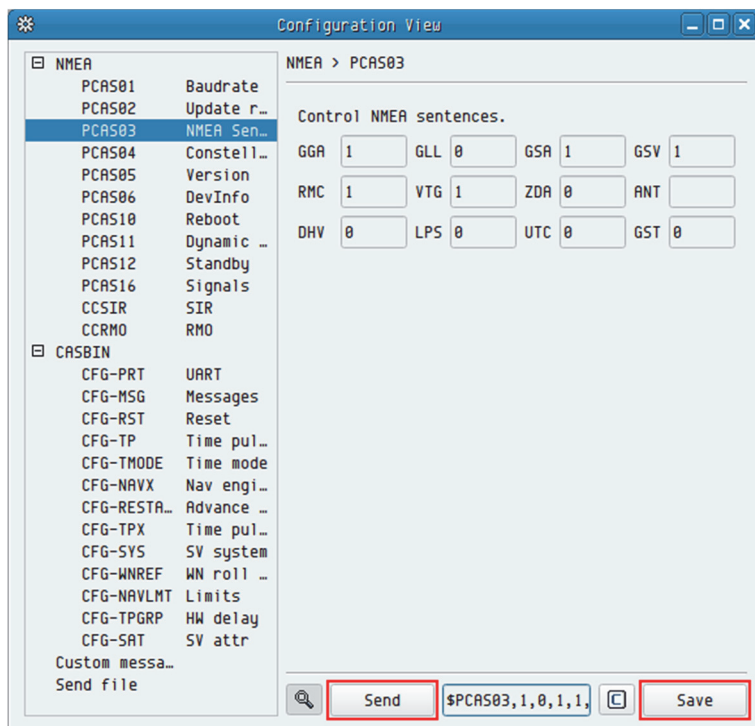
Click "Baudrate", select the baud rate you need, click "Send", and then click "Save".

The selectable range of baud rate is: **4800-115200**.



Modify the NMEA sentences

Click "NMEA Sentences", set the enabled sentences to "1", and set the disabled sentences to "0", click "Send", and then click "Save".



Modify the positioning update rate

Click "Update rate", select the update rate you need, click "Send", and then click "Save". The positioning update rate can only be selected as: **1Hz, 2Hz, 5Hz, 10Hz**.

Note: When the update rate is **5Hz** and **10Hz**, the baud rate can only be selected as **115200**.

